



Dallas County

ECONOMIC OPPORTUNITY ASSESSMENT

COMMUNITIES 
FOUNDATION of TEXAS

CENTER *for* **PUBLIC POLICY PRIORITIES**

@GiveWisely

@CPPP_TX



Dave Scullin President & CEO





Mayor Mike Rawlings

City of Dallas



Sarah Cotton Nelson Chief Philanthropy Officer





Frances Deviney, Ph.D.

CENTER *for* PUBLIC POLICY PRIORITIES

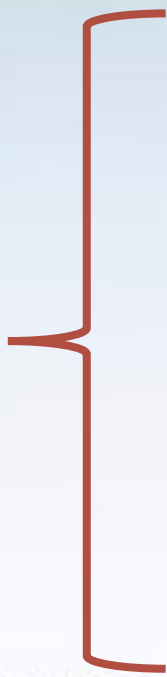


Dallas County

Economic Opportunity
is the goal of ensuring
policies and practices that
give all persons an equal
chance for economic security

Economic
Security

Environment
for Economic
Opportunity

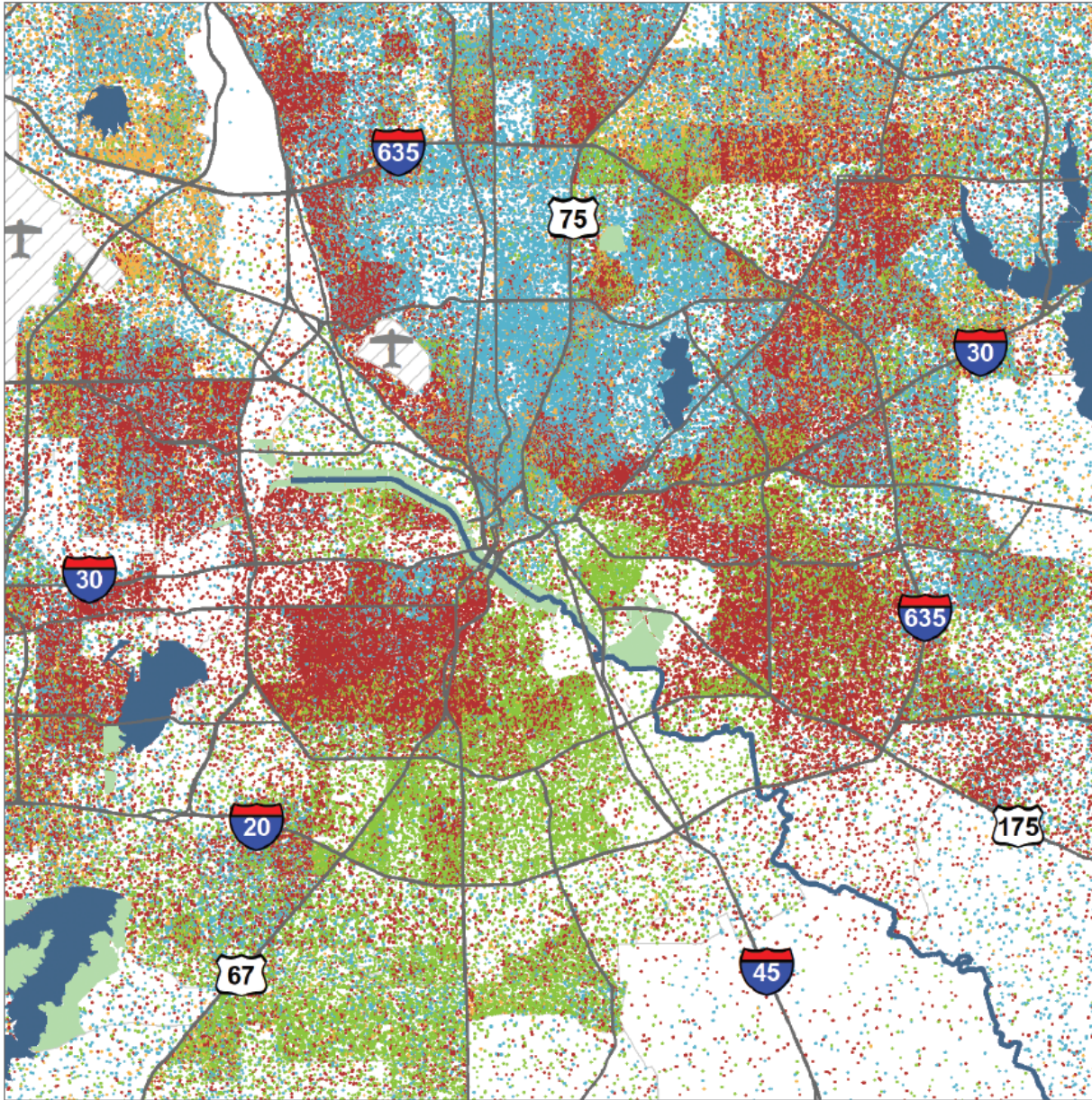


Economic
Security

Income
Education
Debt & Assets
Health
Safety



Dallas County is Geographically Segregated by Race and Ethnicity

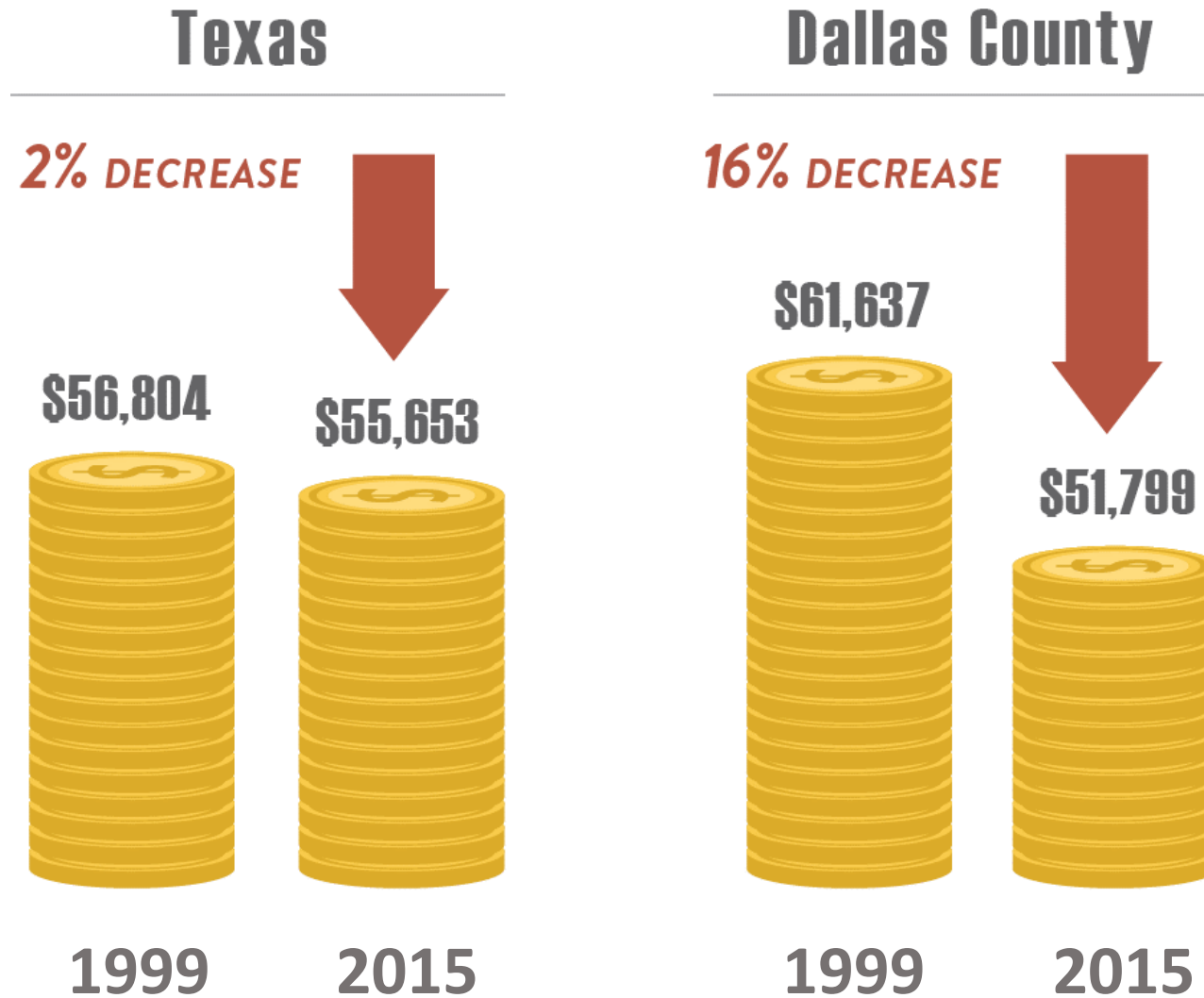


1 DOT = 10 PERSONS

- BLACK
- HISPANIC
- WHITE
- OTHER

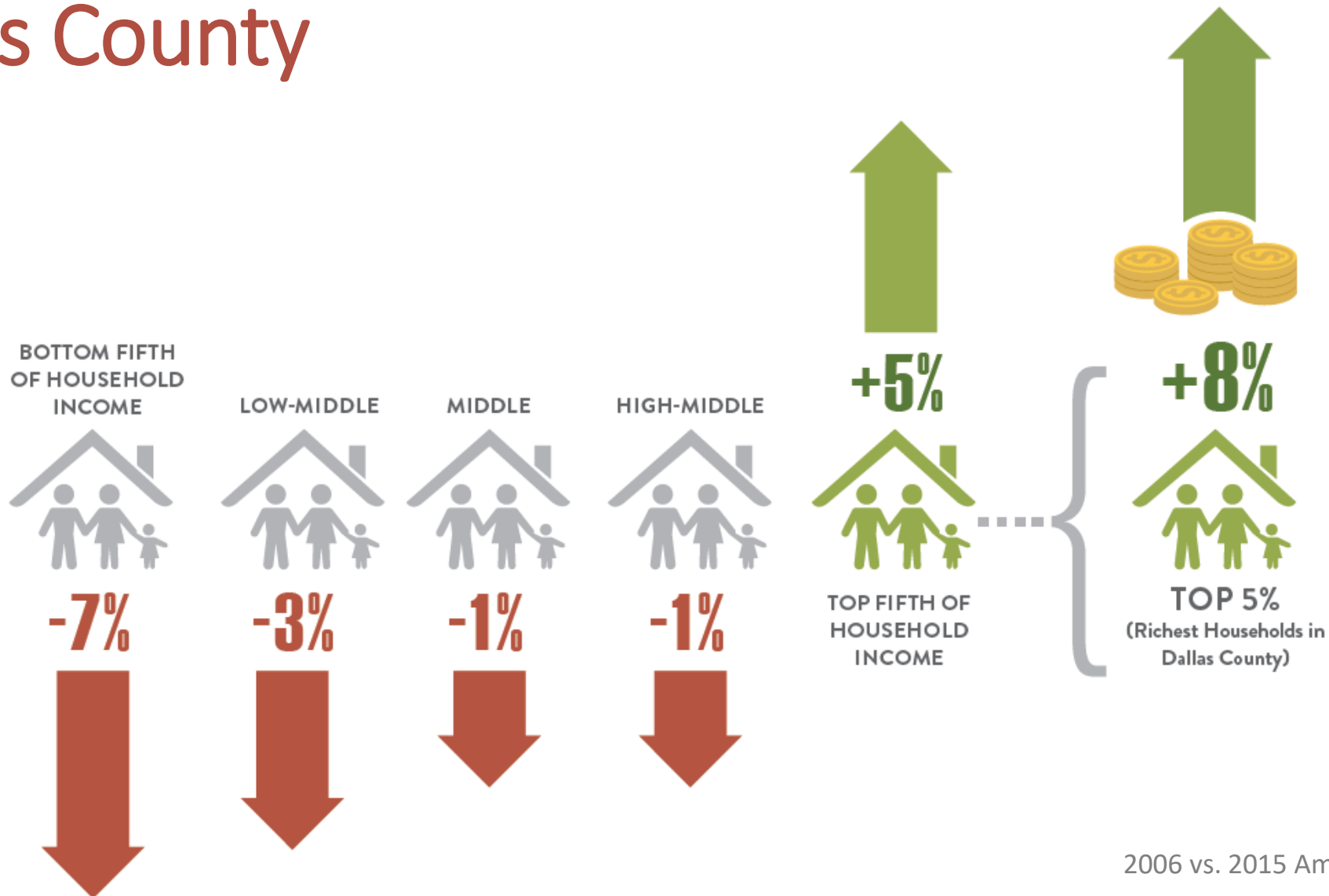
US Census Bureau, 2010 Census

Median income declining rapidly in Dallas County



US Census Bureau, 2000 Census & 2015 American Community Survey

Income polarization continues to grow in Dallas County



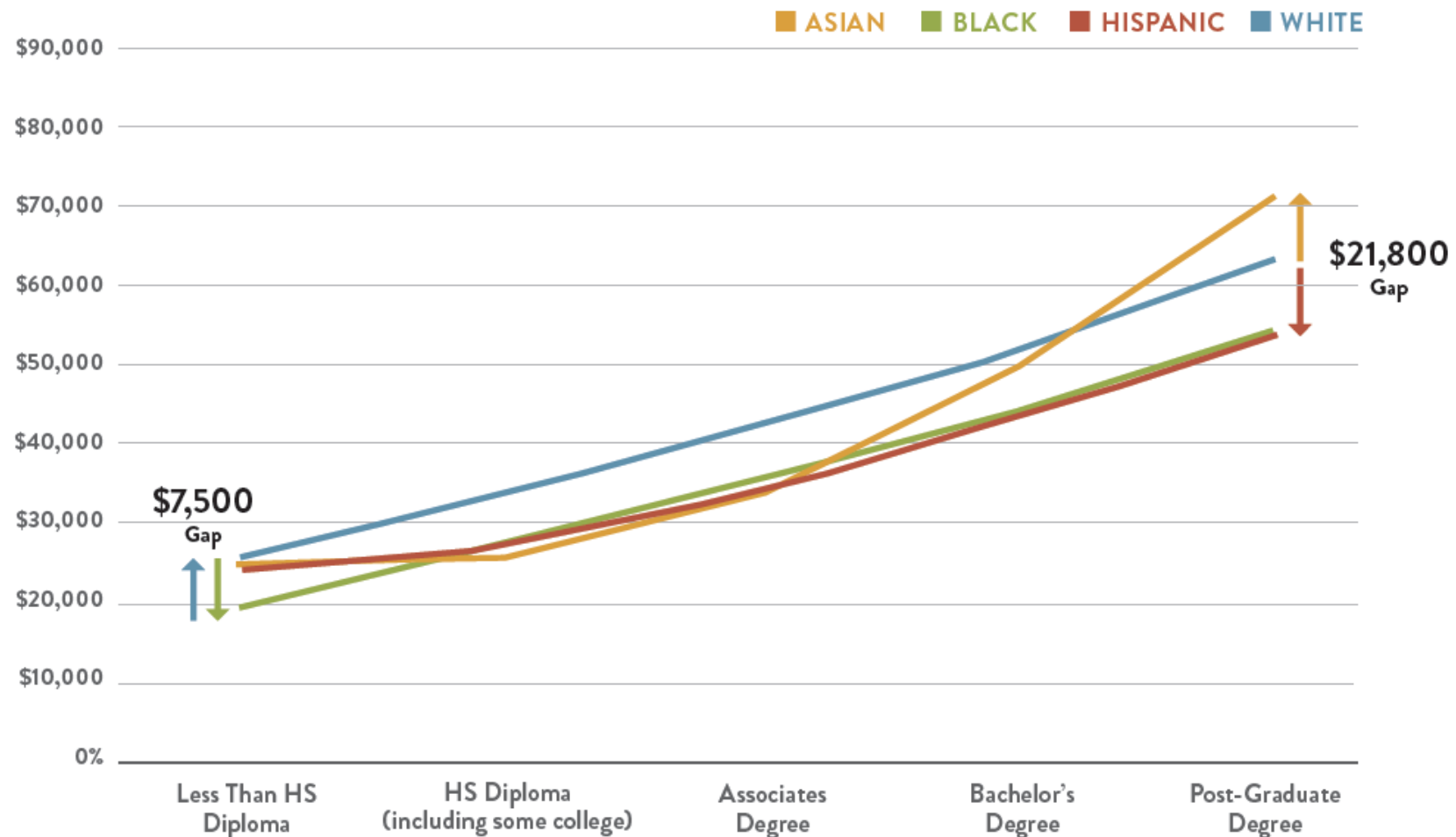
Dallas County income disparities by race

1 Dollar
White workers



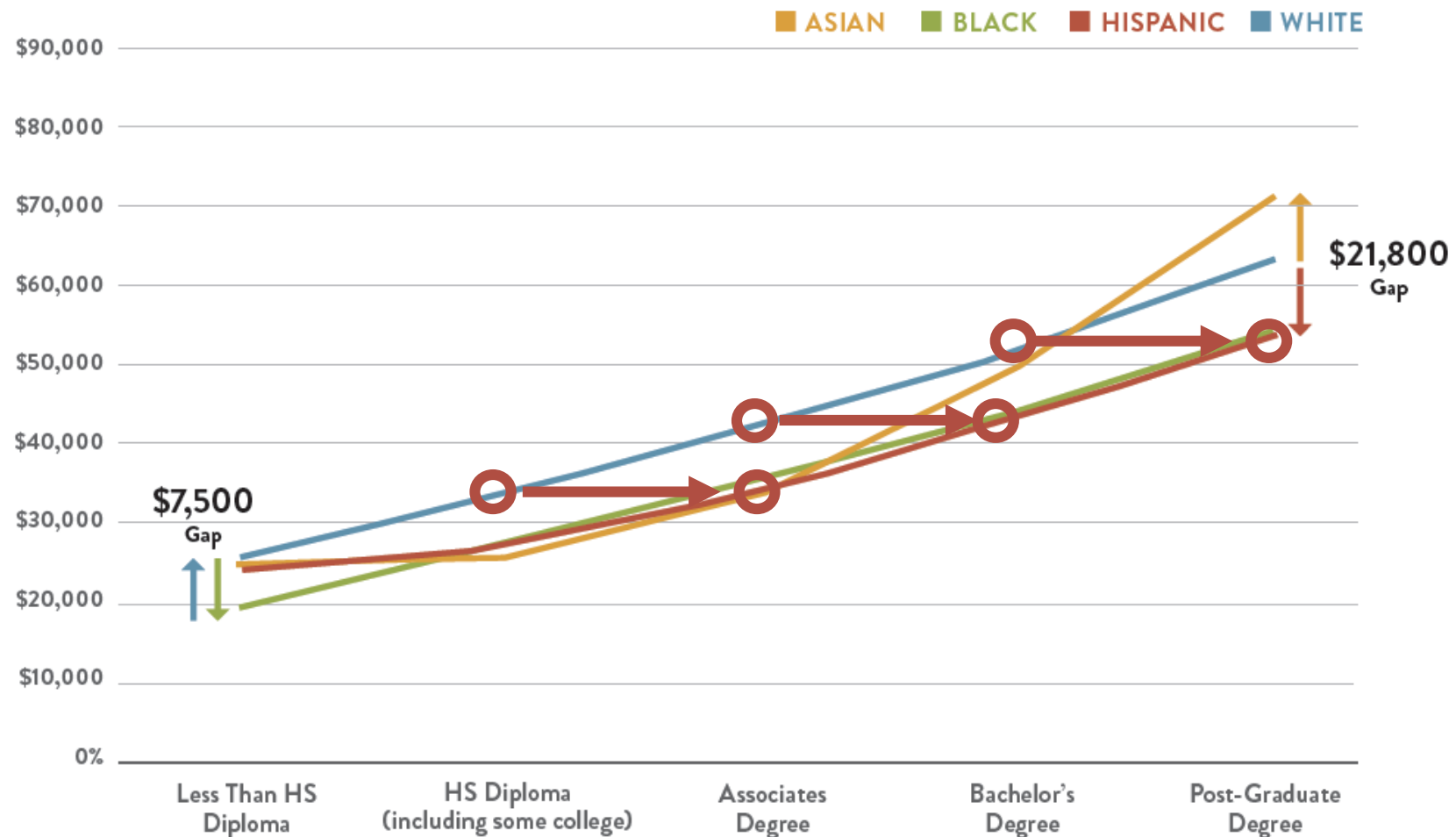
54
Cents
Black Workers

Income rises with education, but gaps by race and ethnicity remain



2011-2015 ACS, 5-year estimates

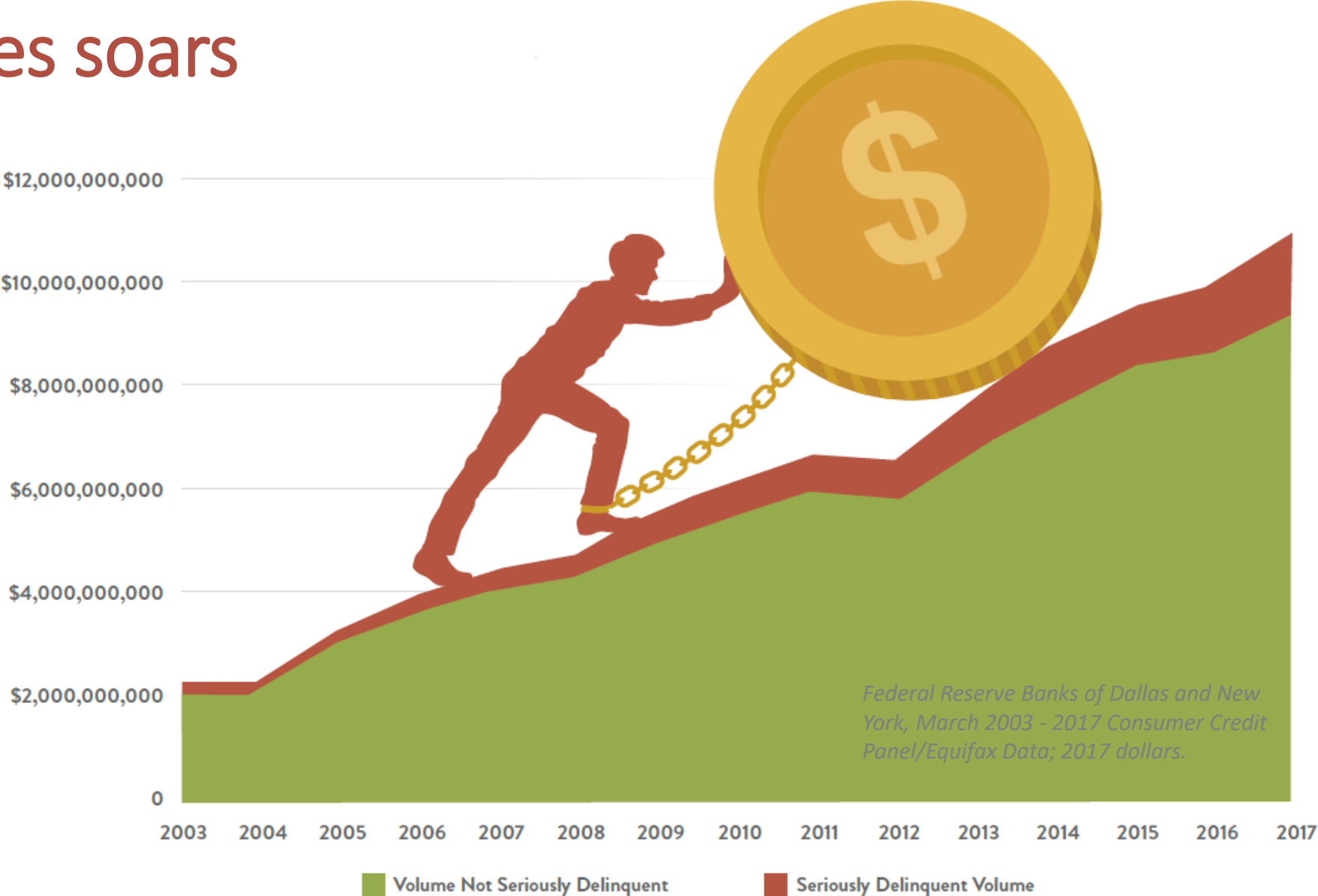
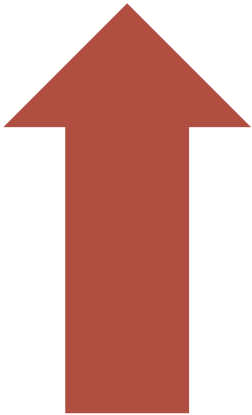
Dallas workers of color have to earn one degree higher than their White peers to earn the same



2011-2015 ACS, 5-year estimates

Increases in student loan volume & delinquencies soars

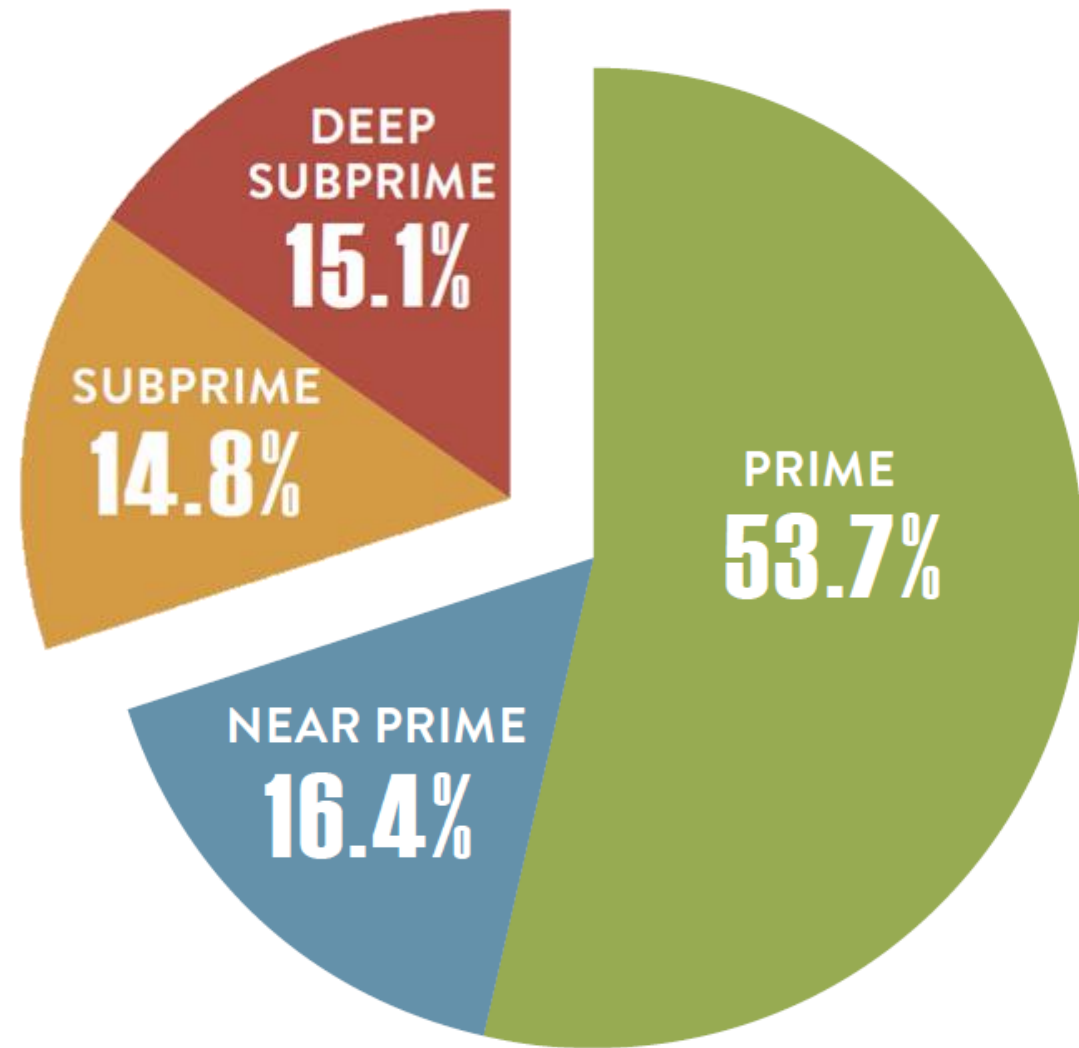
380%



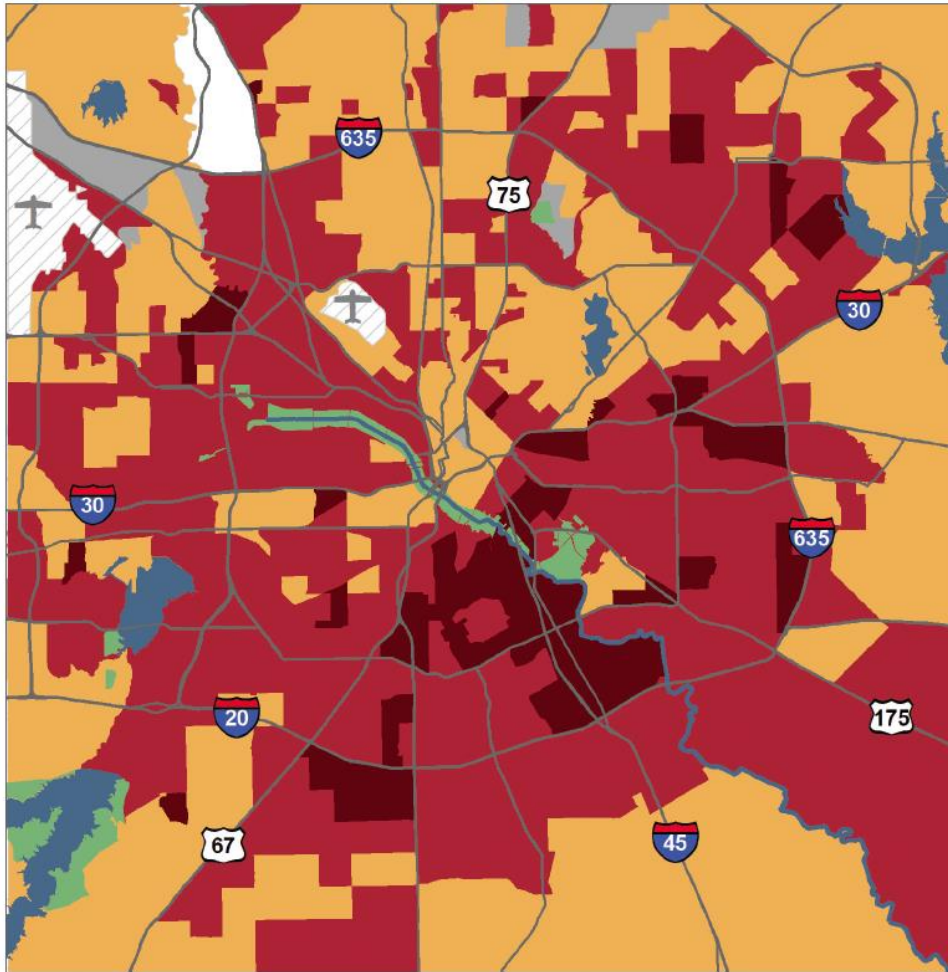
Access to credit is a
measure of
economic inclusion.

Credit scores
of Dallas Co.
borrowers

Unfortunately,
nearly 30% of
Dallas County
borrowers have
subprime credit



Housing burden is high across the county

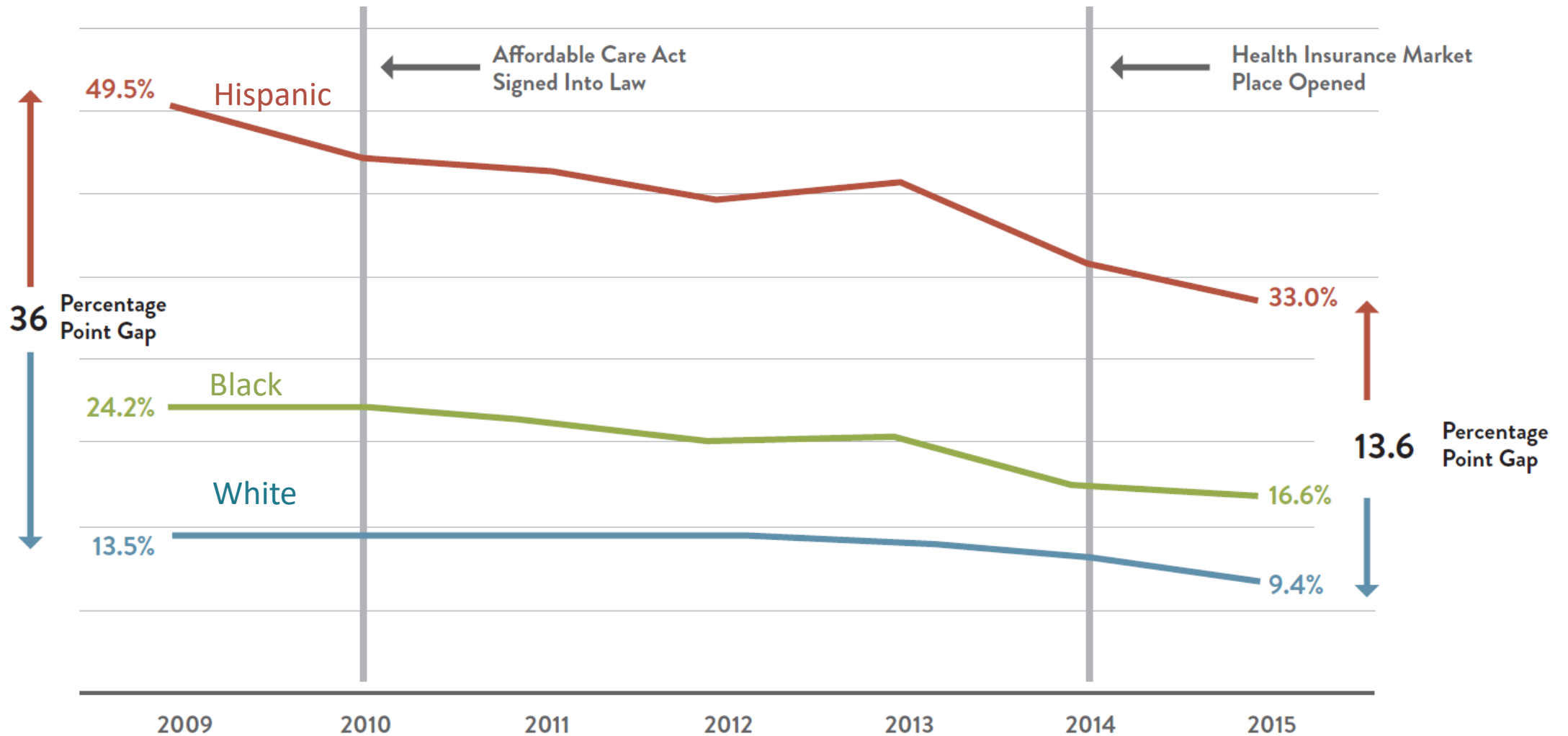


PERCENT OF HOUSEHOLDS SPENDING OVER THIRTY PERCENT OF MONTHLY INCOME ON HOUSING

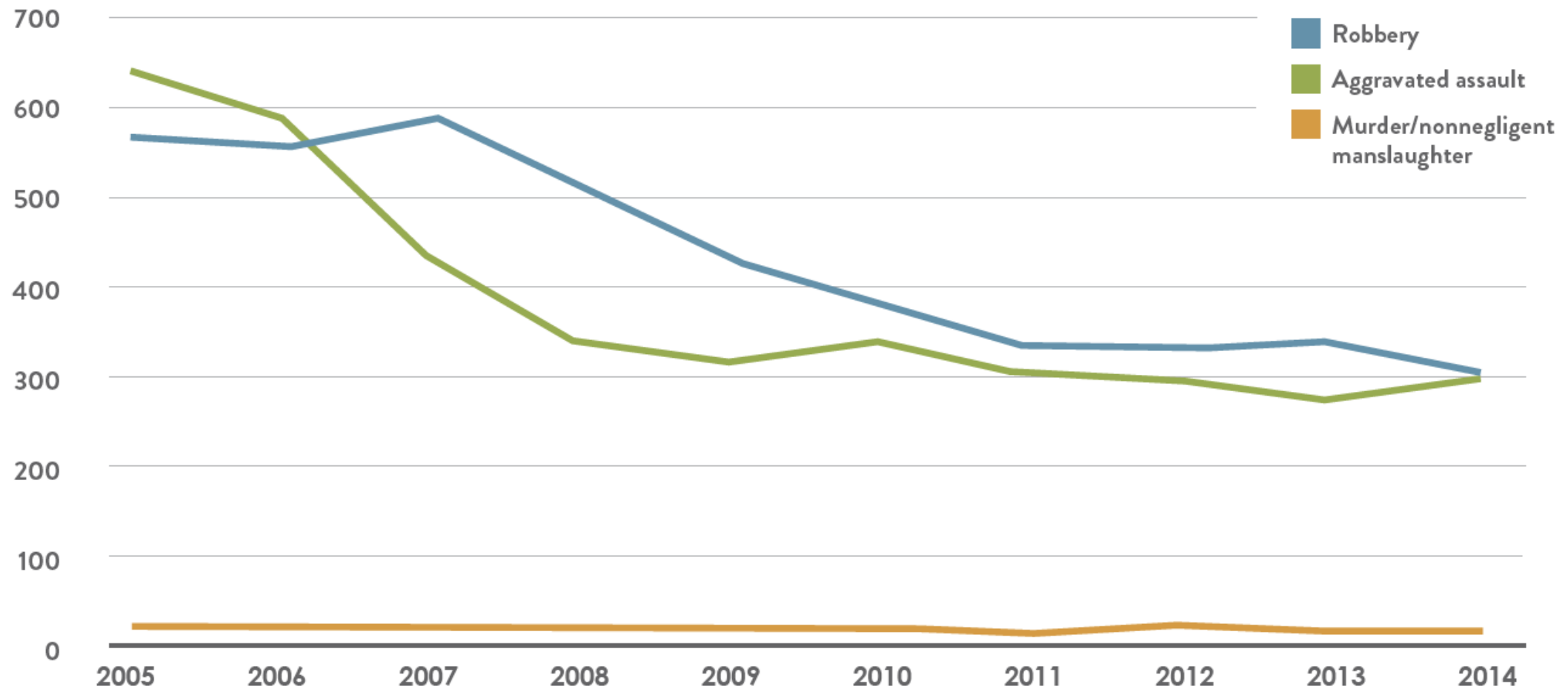
- Less than 20%
- 20% to 39.9%
- 40% to 59.9%
- More than 60%

2015 American Community Survey

Good news: Uninsured rates falling in Dallas County

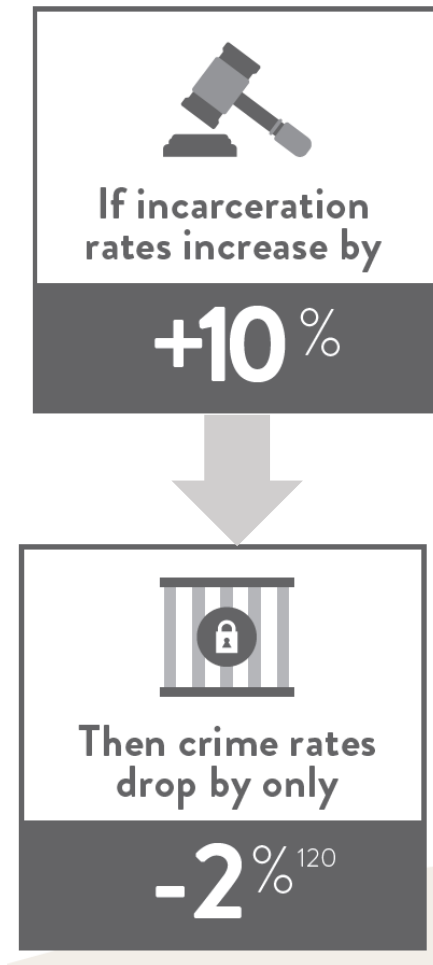


Good News: Violent crimes in Dallas decline dramatically



FBI 2005-2014 Uniform Crime Reports, per 100,000

Educational attainment and incarceration are linked in U.S.

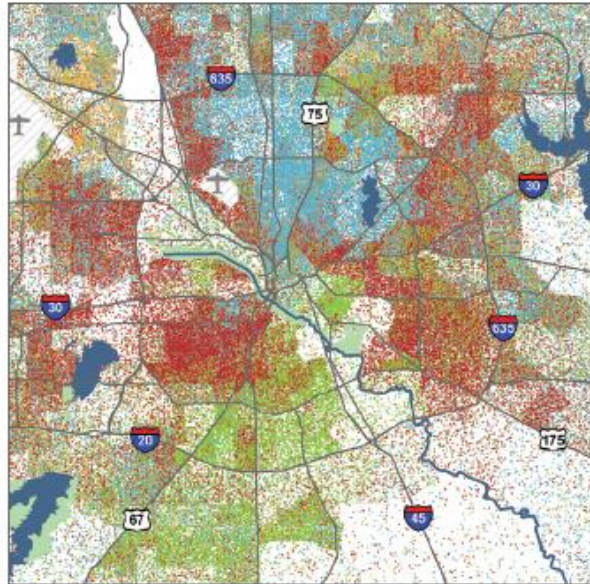


VS.



Race, Education, Income & Place

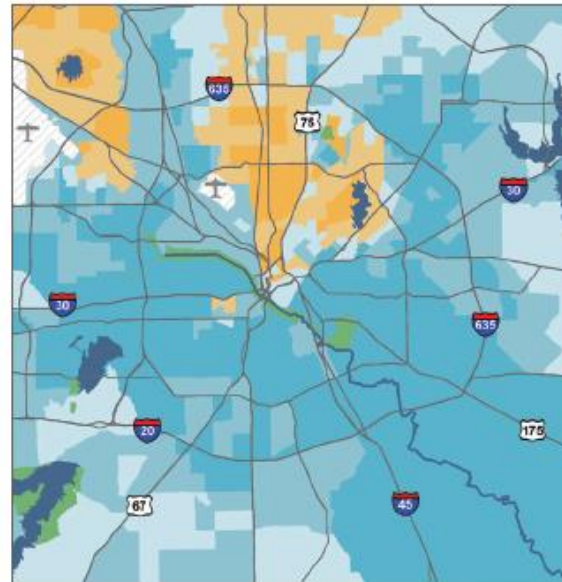
Population Density by Race and Ethnicity



1 DOT = 10 PERSONS

- BLACK
- HISPANIC
- WHITE
- OTHER

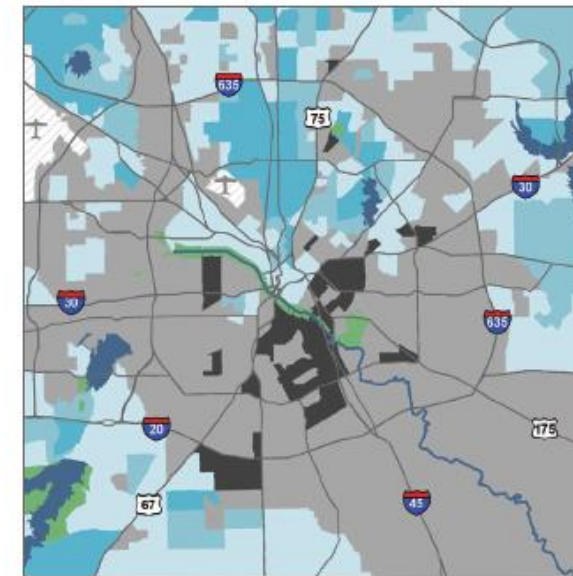
Share of Adults with a College Degree



PERCENT OF ADULTS AGES 25+ WITH AN ASSOCIATES DEGREE OR HIGHER LEVEL OF EDUCATION

- Less than 20%
- 20% to 39.9%
- 40% to 59.9%
- 60% to 79.9%
- 80% or more

Median Household Income



MEDIAN HOUSEHOLD INCOME

- Less than \$25,000
- \$25,000 to \$49,999
- \$50,000 to \$74,999
- \$75,000 to \$999,999
- \$100,000 or more

Dallas County is Growing and Changing

2.5
Million

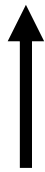
2011 2012 2013 2014 2015 2016 2017 2018 2019 20



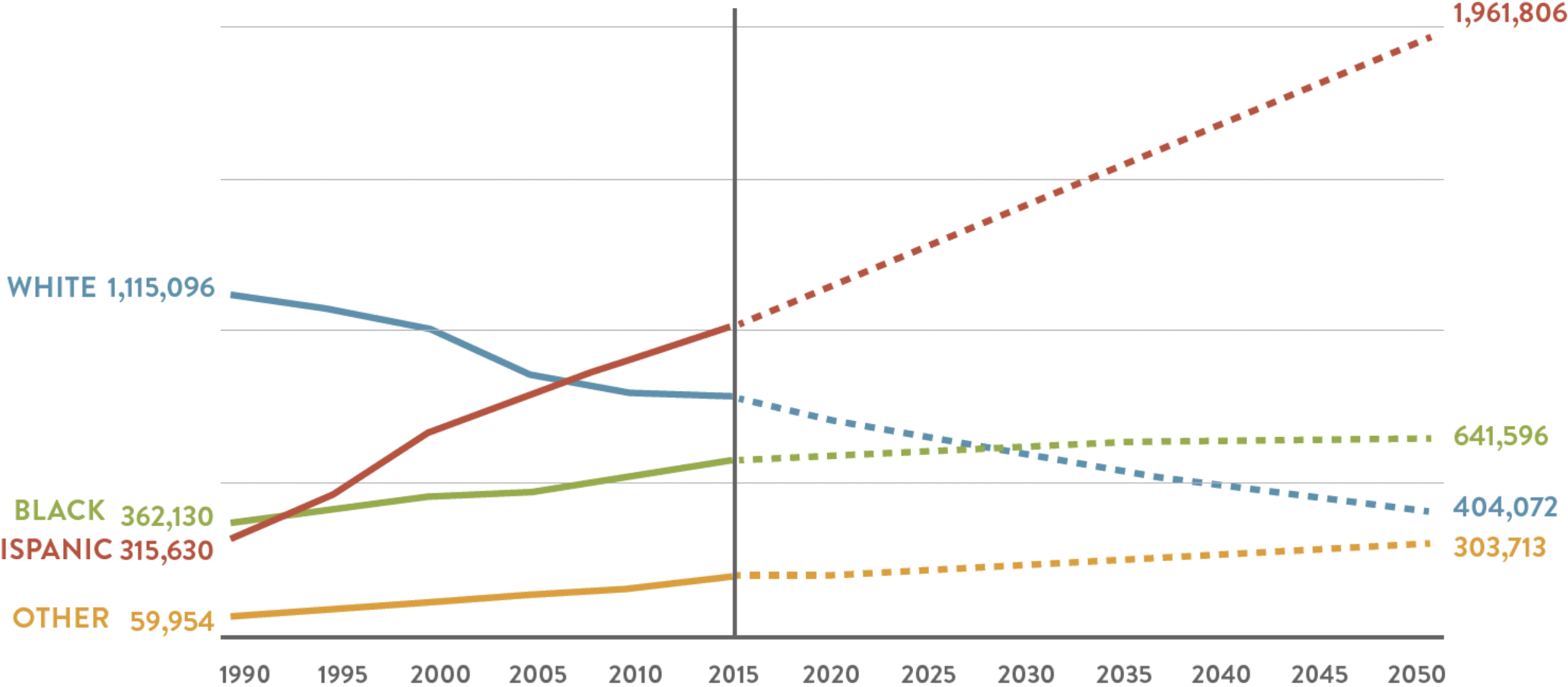
Dallas County is Growing and Changing

**3.3
Million**

2046 2047 2048 2049 2050 2051 2052 2053 2054 2055



Dallas County population change . . . Now and in the future



Texas Demographic Center, Population Estimates & Projections

For economic security to thrive in Dallas,
we can't forget about what's under the surface





Judge Clay Jenkins

Dallas County



Sarah Cotton Nelson Chief Philanthropy Officer



May 8, 8:30 am -12:00 pm

Nonprofit Workshop

Register at CFTexas.org



Thank you



COMMUNITIES
FOUNDATION *of* TEXAS

@GiveWisely

@CPPP_TX